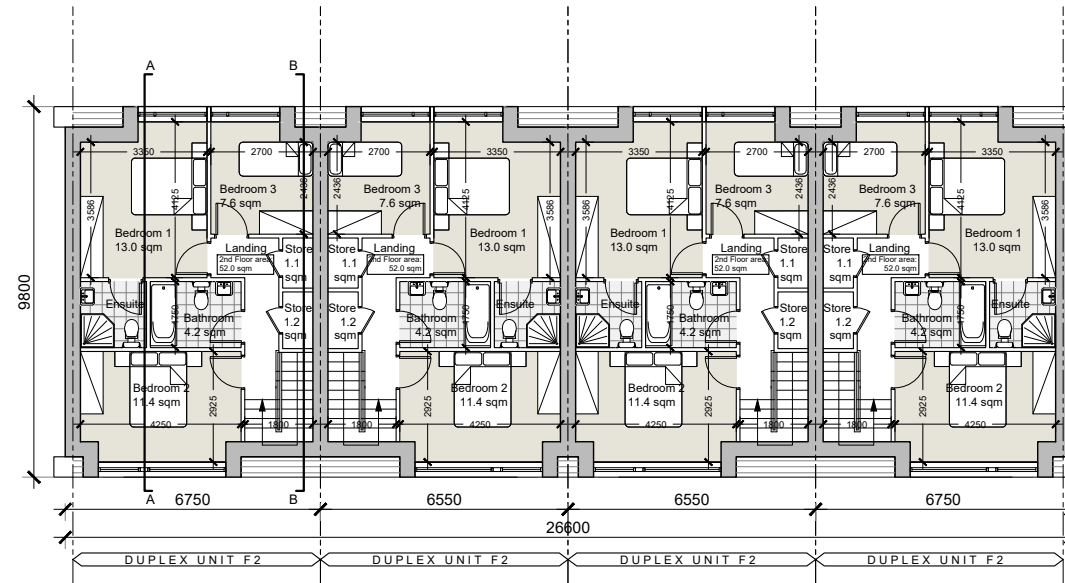


Upper Ground Floor Plan - Scale 1:200



Second Floor Plan - Scale 1:200

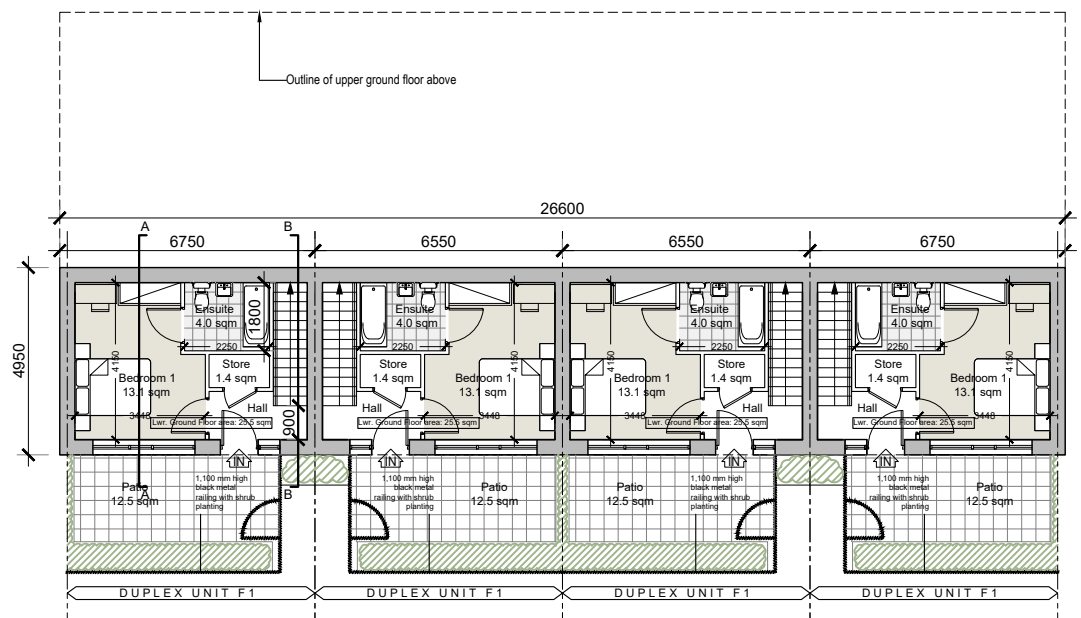
Type F (Duplex)

F1-Lower Unit (2 bed)

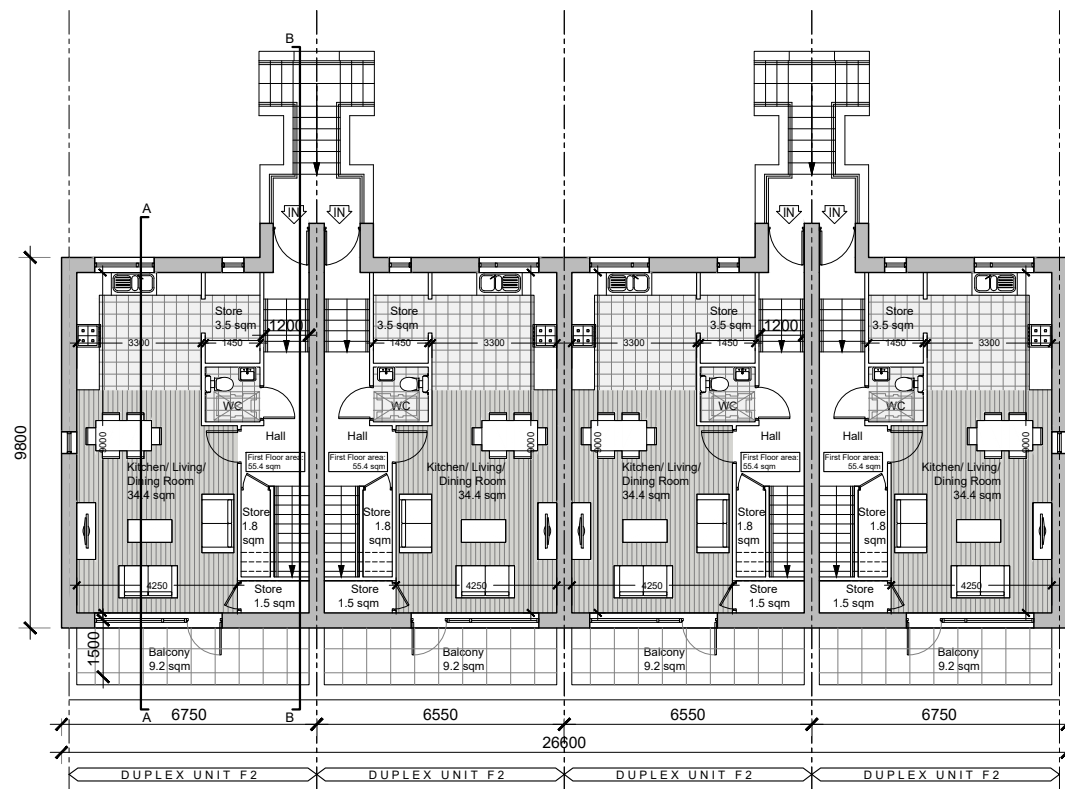
Lower Ground Floor	25.5 sqm
Upper Ground Floor	67.0 sqm
Total	92.5 sqm

F2-Upper Unit (3 bed)

First Floor	55.4 sqm
Second Floor	52.0 sqm
Total	107.4 sqm



Lower Ground Floor Plan - Scale 1:200

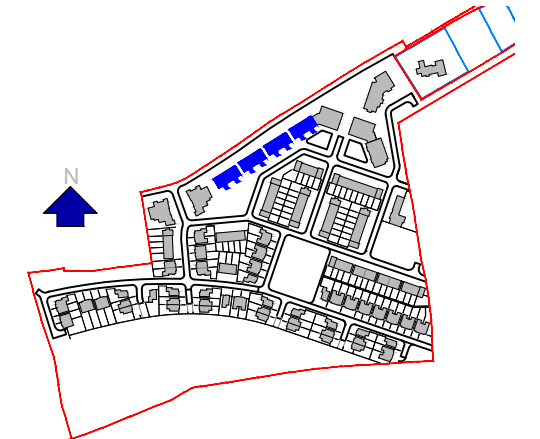


First Floor Plan - Scale 1:200

- GENERAL NOTES
1. COPYRIGHT RESERVED.
 2. DO NOT SCALE DRAWING. USE FIGURED DIMENSIONS ONLY.
 3. ALL DISCREPANCIES TO BE REPORTED TO ARCHITECT.
 4. THE CONTRACTOR IS RESPONSIBLE FOR CHECKING ALL LEVELS AND DIMENSIONS.
 5. ALL STRUCTURE TO BE TO STRUCTURAL ENGINEERS DETAILS.
 6. ALL MECH & ELEC SERVICES TO SERVICES ENGINEERS DETAILS.
 7. ALL PROPRIETARY ITEMS TO BE INSTALLED IN ACCORDANCE WITH MANUFACTURERS INSTRUCTIONS.
 8. CONTRACTOR IS RESPONSIBLE FOR THE COORDINATION OF STRUCTURE FINISHES AND SERVICES.

REV	DATE	DESCRIPTION	BY

Block Type F (Duplex)



KEY PLAN
NOT TO SCALE



JOHN FLEMING ARCHITECTS

The Tree House, 17 Richview Office Park
Clonskeagh, Dublin, D14 XR82
T: (01) 6689888 E: info@jfa.ie W: www.jfa.ie

CLIENT
ARDSTONE-HOMES-LTD

PROJECT
RESIDENTIAL HOUSING DEVELOPMENT
ARDAROSTIG, BISHOPSTOWN, CO CORK

DRAWING
DUPEX - TYPE F
FLOOR PLANS

SCALE
1:200 @ A3

DRAWN BY
RJ

DATE
March 2021

DRAWING NUMBER
ARG - JFA - ZZ - DF - DR - A - P2006

DRAWING LOCATION
\\sabin\jfa\19\proj\1923\03-planning\3.1.2-are\duplex-unit

DRAWING STATUS
PLANNING

PLANNING

